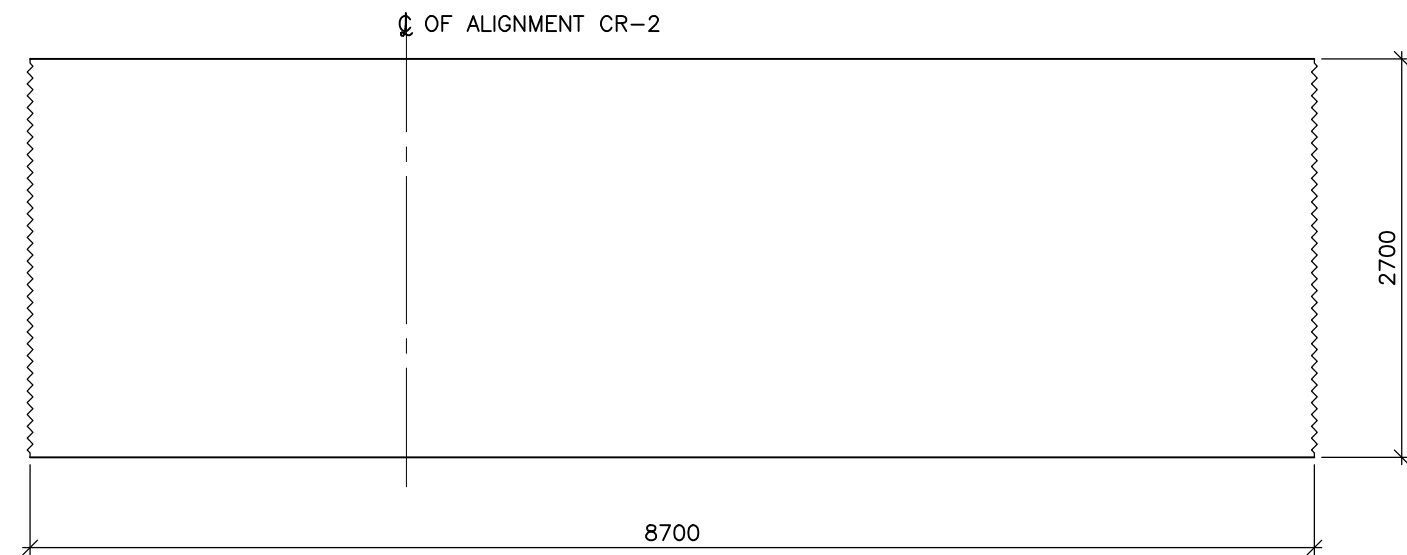
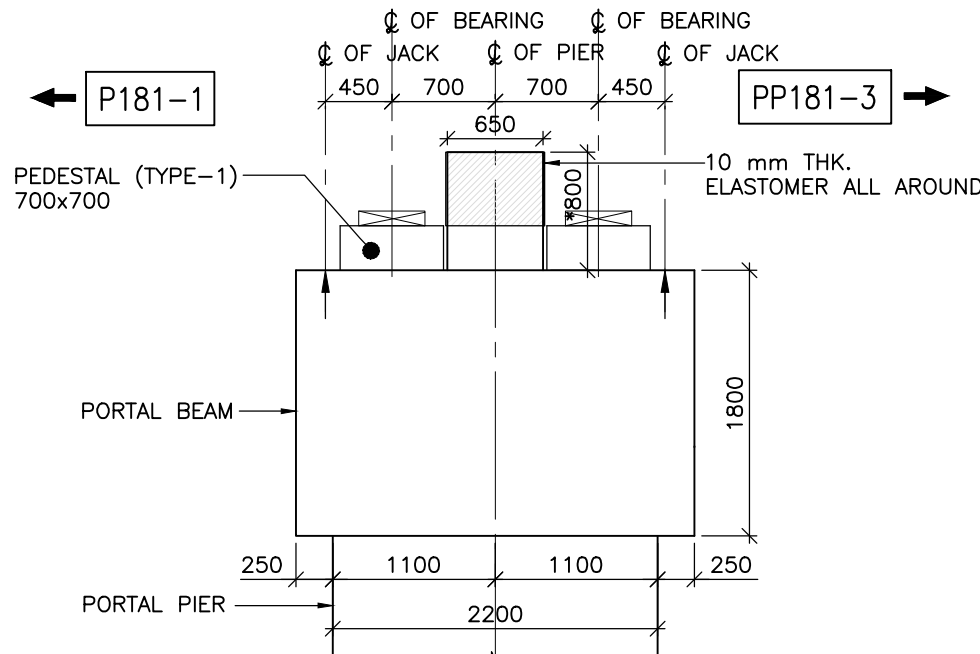


ELEVATION OF PRECAST BEAM  
(SCALE 1:50)

SECTION A-A  
(SCALE 1:50)

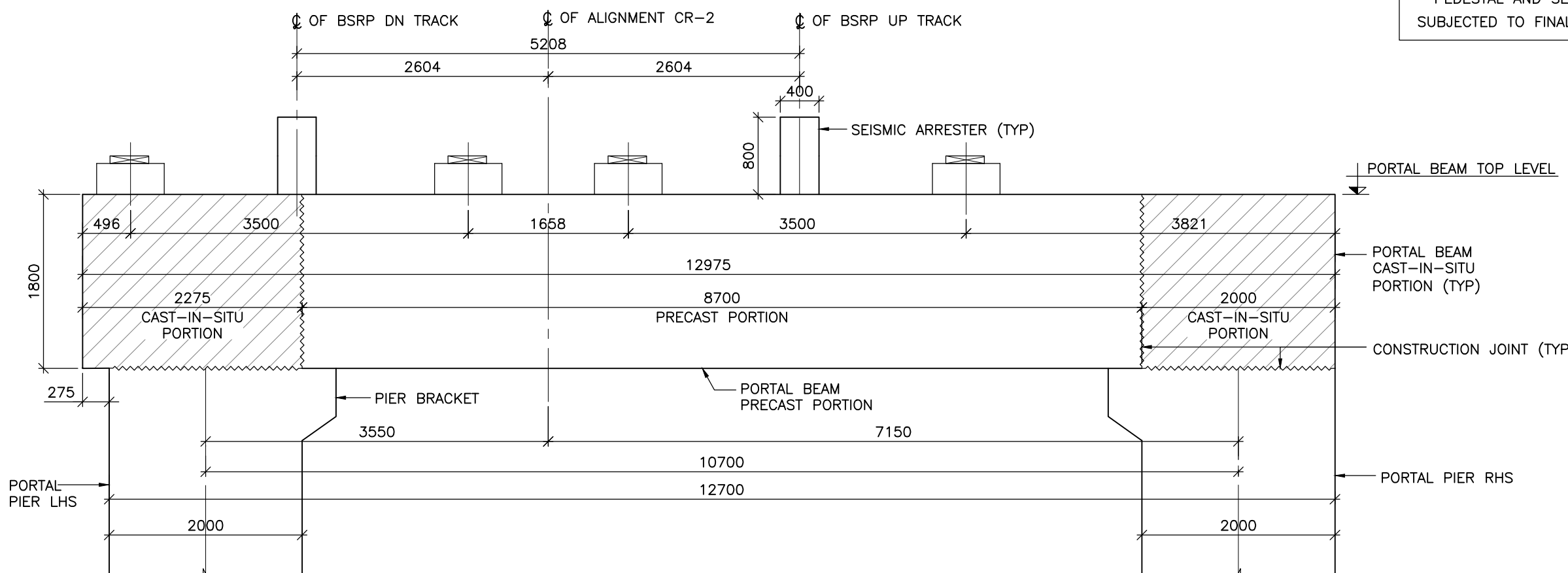


PLAN AT TOP OF PRECAST BEAM  
(SCALE 1:50)

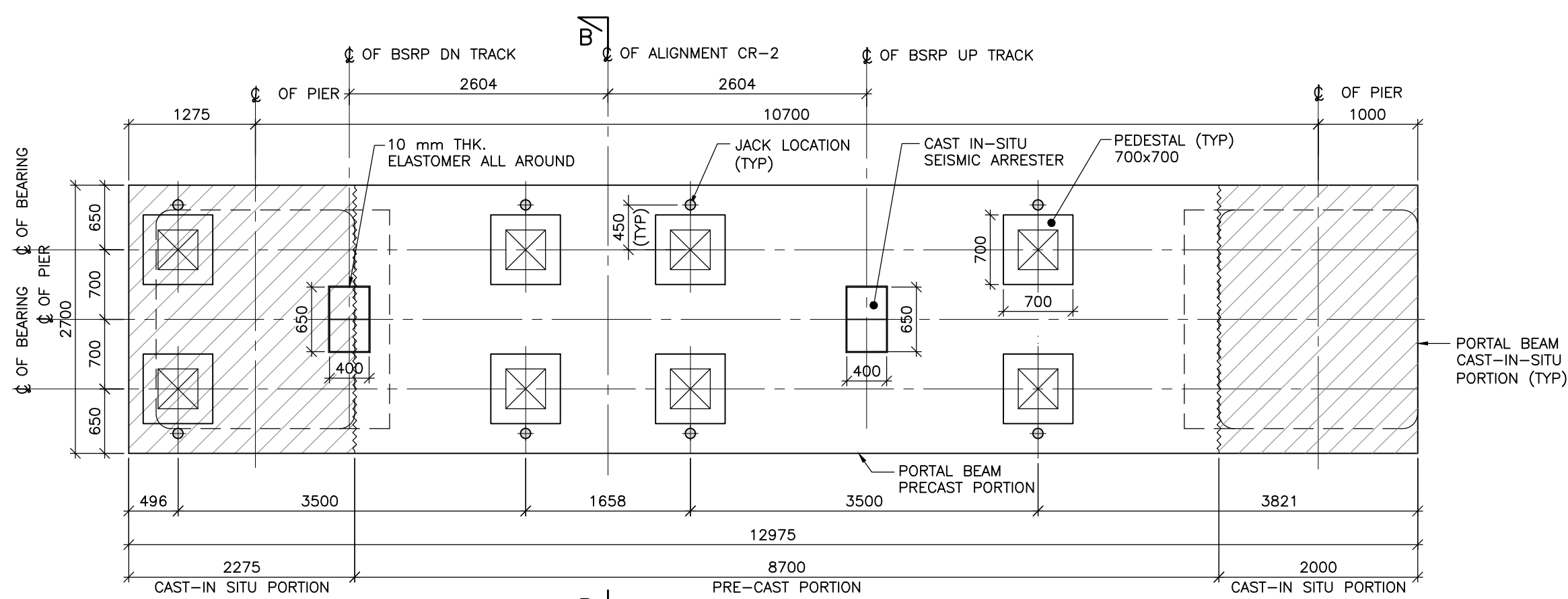


SECTION B-B  
(SCALE 1:50)

\* PEDESTAL AND SEISMIC ARRESTER HEIGHTS ARE  
SUBJECTED TO FINALIZATION OF TRACK PLINTH HEIGHT



ELEVATION OF PORTAL BEAM  
(SCALE 1:50)



PLAN AT TOP OF PORTAL BEAM  
(SCALE 1:50)

#### CONSTRUCTION SEQUENCE:

1. CAST PORTAL PIER WITH BRACKET.
2. CAST PRECAST PORTAL BEAM IN CASTING YARD.
3. AFTER 14 DAYS PRECAST PORTAL BEAM CAN BE ERECTED OVER ALREADY CAST PIER AFTER 28 DAYS OR FULL STRENGTH OF PIER CONCRETE.
4. CAST IN SITU PORTION OF BEAM OVER PIERS.
5. AFTER 28 DAYS SUPER STRUCTURE CAN BE ERECTED.

#### REFERENCE DRAWINGS:

1. 022077-BSRP-CR2-C-VD-GEN-10-2007 TO 2015...GENERAL ARRANGEMENT DRAWING FOR VIADUCT PORTION FOR CH.13+563.903km TO CH.16+461.903km
2. 022077-BSRP-CR2-C-VD-0-20-1655...DIMENSION DETAILS OF FOUNDATION AND SUBSTRUCTURE FOR PORTAL PIER PP181-2
3. 022077-BSRP-CR2-C-VD-0-20-1656...REINFORCEMENT DETAILS OF PIER, PILE & PILE CAP FOR PORTAL PIER PP181-2
4. 022077-BSRP-CR2-C-VD-0-20-1762...REINFORCEMENT DETAILS OF PORTAL BEAM FOR PORTAL PIER PP181-2
5. 022077-BSRP-CR2-C-VD-GEN-20-5000...GENERAL NOTES
6. 022077-BSRP-CR2-C-VD-GEN-10-1652...DIMENSIONAL & REINFORCEMENT DETAIL OF PIER PROTECTION
7. 022077-BSRP-CR2-C-VD-GEN-10-1739...TYPICAL DETAIL OF EARTHING BAR
8. 022077-BSRP-CR2-C-VD-GEN-30-1738...TYPICAL DETAIL OF DRAINAGE SCHEME AT PORTAL PIER LOCATION
9. 022077-BSRP-CR2-C-VD-GEN-10-1657 & 022077-BSRP-CR2-C-VD-GEN-10-1658 .....INTERFACE DETAILS DRAWING.

GOOD FOR CONSTRUCTION

NOTES :				LEGEND :		REFERENCE DRAWINGS :				REFERENCE DOCUMENTS :				KEY PLAN				STATION BOX KEY PLAN									
				<div><div><div></div></div><div>— BEARING</div><div><div></div></div><div>— JACKING POSITION</div><div><div></div></div><div>— CAST IN SITU PORTION</div></div>						1. DOC-BSRP-CR2-EV-DON-GEN-30-1714...DESIGN NOTE OF PIER, PILE CAP & PILE FOR PORTAL PIER PP181-2 TO PP181-4 2. DOC-BSRP-CR2-EV-DON-GEN-20-1785...DESIGN NOTE OF PORTAL BEAM FOR PORTAL PIER PP181-2 TO PP181-4																	
REV/		DATE		BRIEF DESCRIPTION		CONTRACTOR :		QUALITY ASSURANCE				GENERAL CONSULTANTS				EMPLOYER :				PROJECT :							
								TRANSPORTATION INFRASTRUCTURE IC EDRC-SPECIAL BRIDGES												RAIL INFRASTRUCTURE DEVELOPMENT COMPANY (KARNATAKA) LIMITED				BENGALURU SUBURBAN RAILWAY PROJECT (BSRP) K-RIDE CORRIDOR - 2			
																</											